

Two powerful EV charging tools that will help you manage your fleet and your charging costs

Now that you've decided to get rid of your gas guzzlers and add electric-powered vehicles to your fleet, welcome to a whole new world of other challenges.

To start, your facility's electric costs will be higher. A lot higher if you don't understand how the power company charges for electricity and how you can take advantage of it to get the best rates. And what if one of your vehicles fails to charge and is unavailable for the next day's work?



All you have to do is plug in.

EVauto® fleet charging control system consists of two powerful, easy-to-use, proprietary EV control management tools that will automatically reduce your electric vehicle charging costs, improve your vehicle availability and give you important operational data for better fleet management.



Automatically reduces EV charging costs and improves vehicle availability

EVauto® FleetController, the intuitively designed foundation of the system, manages the charging of every vehicle in your fleet, dynamically adapting to each day's rates and conditions.

- Uses smart load management to reduce peak energy consumption
- Allows you to easily schedule and take advantage of time-of-use rates
- Delivers EVSE fault alarms in real time
- Supports scheduled DR compliance and (optional) Open ADR connection
- Tracks energy use for each charger

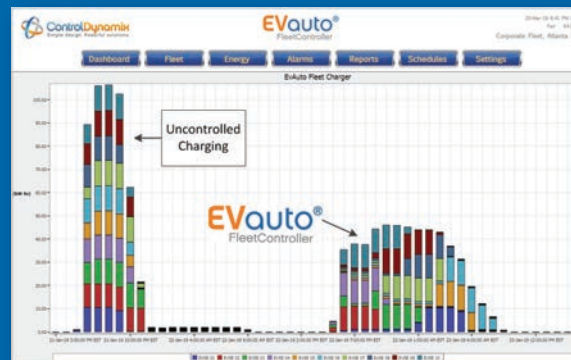


Provides minute-by-minute operational data for better EV fleet management

EVauto® FleetManager provides a real-time cloud-based actionable daily summary of each vehicle's charging operations.

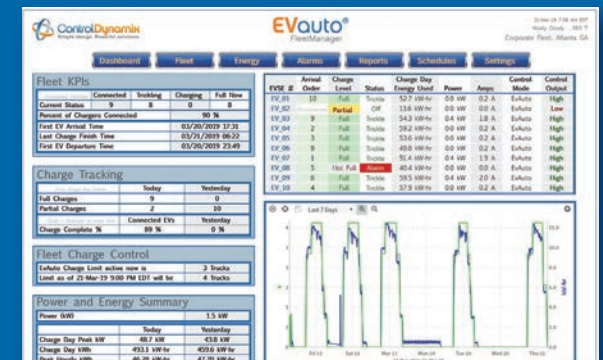
- Provides real-time charging status for all connected vehicles via dashboard
- Alerts you of charging issues, including no connection, no charge, not-full-upon-departure and EVSE faults
- Tracks fleet and individual vehicle arrival and departure times
- Uses revenue-grade metering to give you detailed trending of energy usage, charging duration and peak energy period usage
- Summarizes fleet data to simplify finetuning your FleetController schedule

Kilowatt-hour usage with and without FleetController



How peak load management can control your charging costs

FleetManager dashboard



All the data you need to manage your fleet charging in one place